

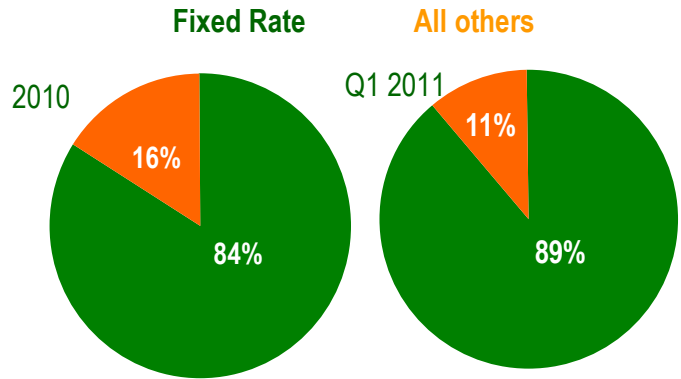
2010 and 2011 Foreclosure Counseling Statistics Hudson Valley Foreclosure Prevention Services

Homeowners Seeking Foreclosure Counseling Services Percentages of New HVFPS Customers per Year

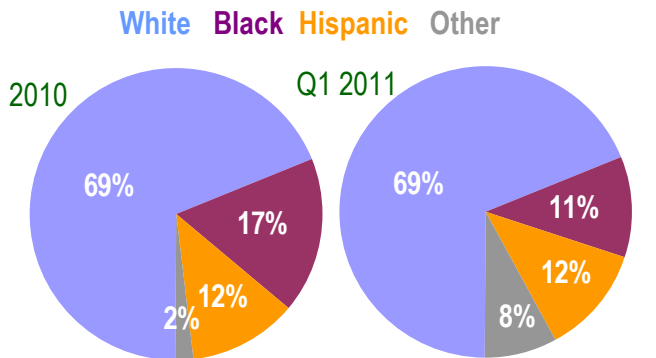
Total New Customers

	2010	2011
Quarter 1	222	137
Quarter 2	169	
Quarter 3	141	
Quarter 4	123	
Total	655	137

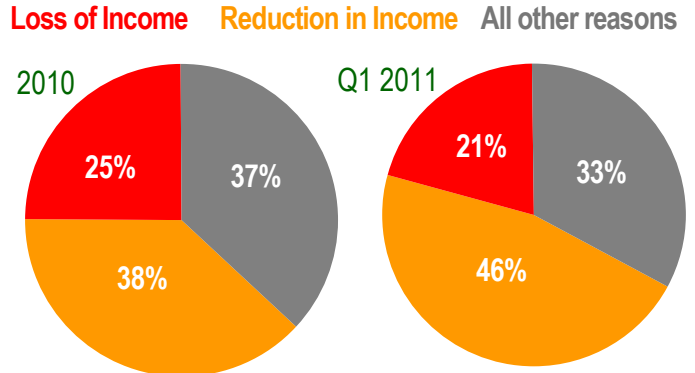
Types of Mortgages



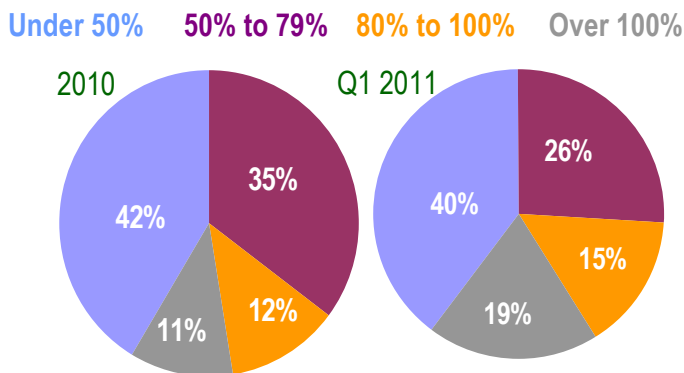
Race / Ethnicity



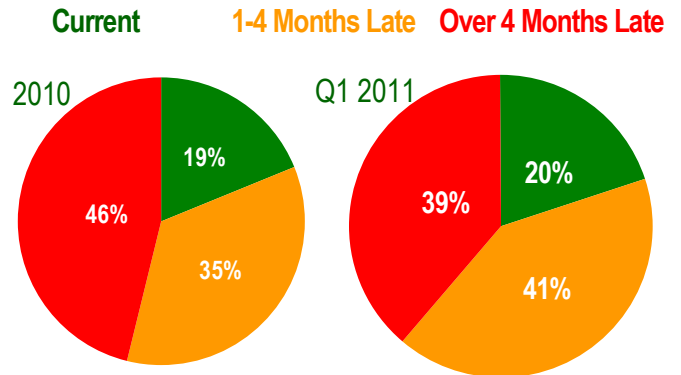
Primary Reason for Default



Income Level



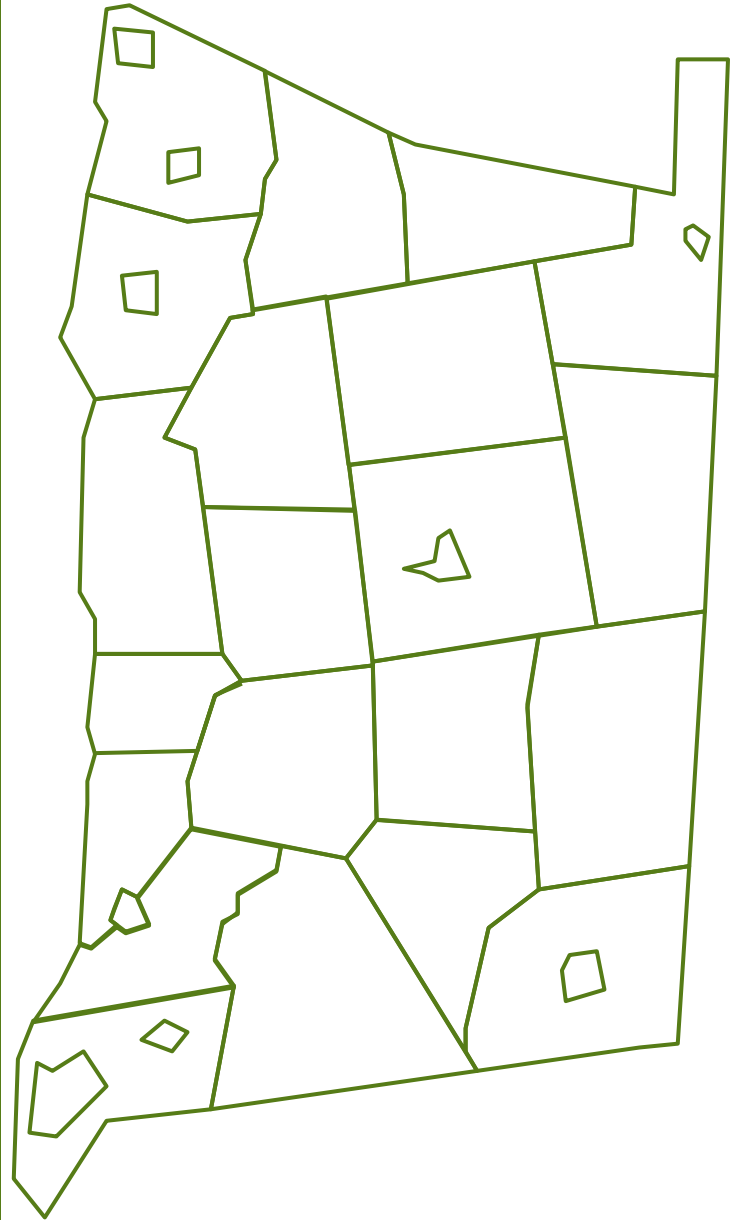
Status of Loan at Intake



Homeownership, Foreclosure Risk and Homeowner Services in Dutchess County

Dutchess County: Amenia (t), Beacon (c), Beekman (t), Clinton (t), Dover (t), East Fishkill (t), Fishkill, Fishkill (t+v), Hyde Park (t), Lagrangeville (t), Milan (t), Millbrook (v), Millerton (v), , North East (t), Pawling (t+v), Pine Plains (t), Pleasant Valley (t), Red Hook (t+v), Rhinebeck (t+v), Stanford (t), Tivoli (v), Union Vale (t), Wappinger (t), Wappingers Falls (v), Washington (t).

Population	297,488
Homeowners	75,068
Homeownership Rate	69.5%
Home Sales 2009-2010	4,143
All NHC-DC Customers	385
Customer to Population Ratio	1 customer per 238 people
Pre-Purchase Customers	700
Pre-Purchase to Home Sales Ratio	1 customer per 6 home sales
Home Sales to Population Ratio	1 home sale per 72 people
Post-Purchase Customers	1,253
Post-Purchase to Homeowners Ratio	1 customer per 60 homeowners
Pre-Foreclosure Notices (August 2010—May 2011)	7,323
Notices to Homeowners Ratio	1 notice per 10 homeowners
Notices to Post-Purchase Customer Ratio	1 customer per 5.8 notices



Data Sources: 2010 Census, NYS Banking Department, NHC-DC



NeighborWorks[®]
HomeOwnership Center
of Dutchess County

